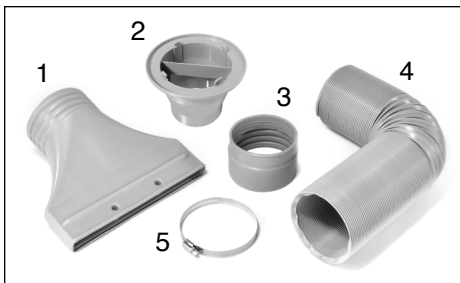


#86105 EXHAUST DUCT INSTRUCTIONS FOR ASSEMBLY



PARTS LIST

1. Exhaust Vent
2. Port Attachment
3. Hose Coupler
4. Extension Hose
5. Hose Clamp



Step 1

Twist the **Exhaust Vent** onto one end of the **Extension Hose**, then twist the **Hose Coupler** onto the other end.

Slide the **Hose Clamp** over the **Hose Coupler**.

Slip the narrow end of the **Port Attachment** inside the **Hose Coupler**, then tighten the **Hose Clamp** to secure the **Port Attachment** in place.

The completed assembly should appear as shown at left.

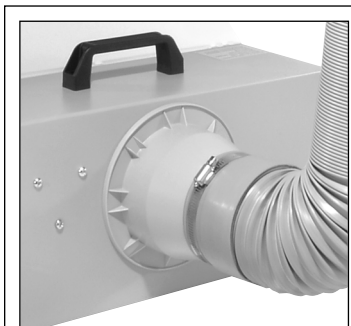


Step 2



The **Port Attachment** includes 4 molded lugs with slots that are designed to lock onto the "X" shaped brace on the fan guard, located on the back of the spray booth.

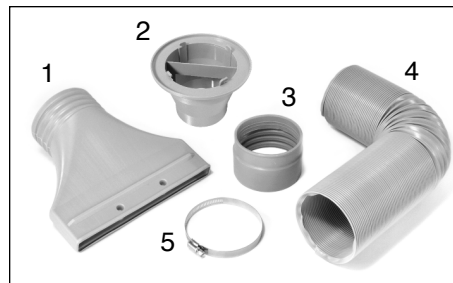
To secure the **Port Attachment** to the fan guard, position the lugs near the "X" brace and twist to lock into place.



Step 3

Once the vent assembly is attached as shown, position the **Extension Hose** as needed to exhaust fumes outside of the work area. The narrow end can be held in place in a partially opened window.

#86105 EXHAUST DUCT INSTRUCTIONS FOR ASSEMBLY



PARTS LIST

1. Exhaust Vent
2. Port Attachment
3. Hose Coupler
4. Extension Hose
5. Hose Clamp



Step 1

Twist the **Exhaust Vent** onto one end of the **Extension Hose**, then twist the **Hose Coupler** onto the other end.

Slide the **Hose Clamp** over the **Hose Coupler**.

Slip the narrow end of the **Port Attachment** inside the **Hose Coupler**, then tighten the **Hose Clamp** to secure the **Port Attachment** in place.

The completed assembly should appear as shown at left.

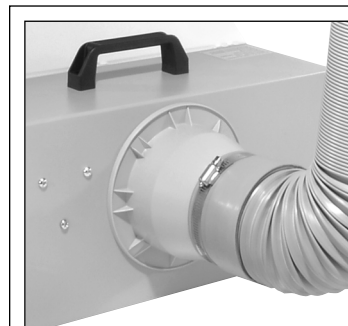


Step 2



The **Port Attachment** includes 4 molded lugs with slots that are designed to lock onto the "X" shaped brace on the fan guard, located on the back of the spray booth.

To secure the **Port Attachment** to the fan guard, position the lugs near the "X" brace and twist to lock into place.



Step 3

Once the vent assembly is attached as shown, position the **Extension Hose** as needed to exhaust fumes outside of the work area. The narrow end can be held in place in a partially opened window.